

EBS 2005 for electronics trading businesses

"We can fully computerise and rely on the order reports for information to manage our various orders from customer. Back-to-back orders are very common in our business and the software can manage this aspect with ease. Our entire computerise system is fully integrated so that it can provide us with on time and accurate information. We are not able find in any standard software in the current marketplace that meets our requirement.

EBS 2005 software Client

Overview

SystemGrafx's **EBS 2005 (Electronics Business Software)** system is designed and developed specially for the electronics trading businesses to improve the productivity and increase revenue by enabling you to manage the sales cycle and improve customer order tracking. It provides instant and up-to-date order information for you to make critical decision on your business and sales processes.

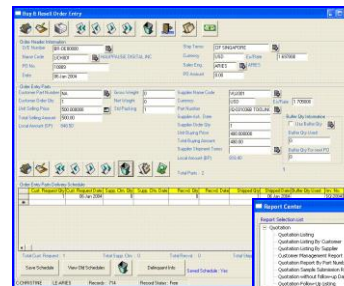
The software is simply to operate and capitalise on the latest technologies. It tackles the business problem and pain areas for your type of business. It provides overall visibility of your orders and their history records, it enable tracking and monitoring of orders for daily operation and reporting.

The front end modules can be easily integrated into the backend financial accounting system. This promotes total integration and reduces transcription errors from one system to another.

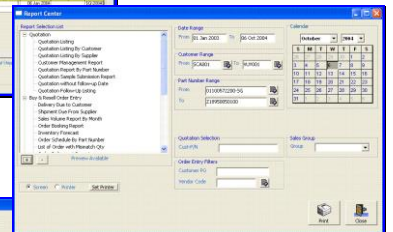


Main Modules

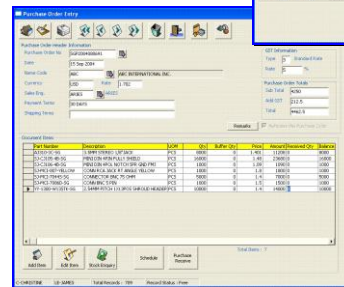
- Price Quotation
- Trading Order Entry
- Agency Order Entry
- Purchase Order
- Inventory Control
- Invoice/Billing
- Reporting
- Financial Accounting System *(optional)*



Trading/Agency Order Entry



Report Center



Purchase Order Entry

About SystemGrafx Pte Ltd

SystemGrafx is a specialist in providing computerisation consultancy, business solutions and applications development services based on industry best practices and cost effective technologies. Through our commitment to deliver the best business solutions to our value customers helps companies, their employees, partners and customers enhance collaboration, lower cost, build business relationships and promote revenue growth.

We understand that Small and Midsize Businesses have unique needs. They require a cost-effective solution that can be up and running quickly. The solution can continue to meet their needs as the business grows. We can create solutions specifically designed for companies in the small and midsize business (SMB) marketplace.

We deliver based on our in-depth experience, skill sets, proven methodology and strong commitment to all our customers.

Key Features

Price Quotation	<ul style="list-style-type: none"> Quick generation of quotation from the software system. View history prices for quotation items and customers. Price break features for each item.
Order Entry	<ul style="list-style-type: none"> 2 types of sales order entries for the electronics business. Software system encompasses 2 types of sales order, typically name as Trading Sales Orders & Agency Sales Orders. Due to the difference in the process, user can select to put in an order into the respective sales entry. User is able to maintain a customer price list for easy reference into the last selling price for the particular customer and sales order items. Track customer delivery schedules Each item is allocated with a list of delivery schedules for the user to update and manage. User can get the up to date information from the order entry about customer request and shipment information, etc.
Purchase Order	<ul style="list-style-type: none"> Integrated with the Order Entry system User can easily extract information from the order entry into the Purchase Order. When the supplier makes shipment, the system will automatically update receiving information back to the order entry. This reduces the time needed to manually update and search for information. Stock inventory automation The receiving event automatically trigger the inventory system to be update with the information, zero human intervention is require to update the electronic stock card.
Invoice/Billing	<ul style="list-style-type: none"> Information from Order Entry Most of the information is entered into the system via the order entry module; user can easily extract the order to convert into an invoice for billing to the customer. Stock inventory automation When the invoice is confirmed, the system will automatically update back to the order entry for shipment and the inventory system reduces the level of all the items in the invoice.
Inventory	<ul style="list-style-type: none"> Electronic Stock Card The stock card is automatically updated via the receiving and invoicing from the daily operations. User can gain access to the stock level of different stock items at any time and any where in the software system. Stock Costing reports Average stock cost and FIFO stock costing reports can be generated from the system on demand.
Report Center	<ul style="list-style-type: none"> Easy and powerful report center Centralised reporting area for easy user access and reference. Access Control Different levels of report control can be designed to restrict user from accessing to some cost sensitive or restricted reports.
System Access Control	<ul style="list-style-type: none"> User Profile The system administrator can define different user from accessing different modules from the user profile setting. Users can login in different workstations and maintain the same level of access control.
Financial Accounting System (Optional)	<ul style="list-style-type: none"> Fully integrated to the backend financial accounting system to reduce data transcription errors. Full books of accounts can be updated and generated from the system. On demand financial reports are readily available.

Business benefits

- Improve productivity** and quality of work by minimising time spent on information and data searches, enabling employees to focus on high value added activities.
- Improve business visibility** and encourage knowledge sharing with accessibility control to restricted modules and reports.
- Order tracking** information is readily available from the system to provide for push-outs and pull-ins.
- Increase business responsiveness** to customer service with real time information system. Timely and accurate information are available from the software system to provide high level of customer service and management information.
- Long term cost** saving can be harness with effective work flow and systematic computerise implementation.
- Fast deployment** allows for quick installation and integrates into the business seamlessly.
- Reliable and effective base model** is designed and tested over the years by many of our customers and users.

Technical Support & Services

- Excellent service track record** for implementing software system in a wide variety industries and business models. After-sales support provides our user with a peace of mind in the implementation process.
- Upgrading and modification** can be done on the system to suit your specific business needs. Upgrading and migration to different data system can be designed and built on the existing business logic and requirements.

System Requirements

Hardware Requirements

Minimum configuration – Pentium 3 500 Mhz, 128 MB RAM, 100 MB HDD
Recommended configuration – Pentium 3 1 Ghz, 512 MB RAM, 200 MB HDD

Server Requirement

Minimum configuration – Pentium 3 1 Ghz, 256 MB RAM, 500 MB HDD
Recommended configuration – Pentium 4 2.8 Ghz, 512 MB RAM, 1 GB HDD

Software Requirement

Microsoft Windows Platform (Windows 2000/XP/2003) operating system

For more information, please contact:

Mr James Lee / Consultant

Email: jameslee@systemgrafx.com

Ms Lynn Wong / Business Development

Email: lynnwong@systemgrafx.com

SystemGrafx Pte Ltd

100D Pasir Panjang Road, #04-05 Meissa Singapore 118520

Tel : 65-6274 2488

Website: <http://www.systemgrafx.com>